

SILVERCODERS MOODLE PLATFORM



USER GUIDE



Co-funded by the
Erasmus+ Programme
of the European Union

2020-1-SEO1-KA227-ADU-O92582

SILVERCODERS MOODLE PLATFORM

USER GUIDE

The European Commission's support for the production of this publication does not constitute an endorsement of the contents, which reflect the views only of the authors, and the Commission cannot be held responsible for any use which may be made of the information contained therein

WHAT IS MOODLE

Moodle stands for “Modular Object-Oriented Dynamic Learning Environment”.

Moodle is a learning platform designed to provide educators, administrators and learners with a single robust, secure and integrated system to create personalised learning environments. You can download the software onto your own web server or ask one of our knowledgeable Moodle Partners to assist you.

SILVERCODERS PLATFORM

Our platform hosts the eCourse “**Train the trainers - Make coding easy for adult learners:** a programme for trainers collecting the materials developed for the implementation of the SilverCoders Programme and learning methodology.

This ecourse was developed in the framework of the project “SilverCoders programme, funded by the European Commission’s Erasmus+.

TO FOLLOW OUR ECOURSES. VISIT:
[HTTPS://SILVERCODERS.EU/TRAINING/](https://silvercoders.eu/training/)
AND SELECT YOUR LANGUAGE.

Available courses



Train the trainers

Make coding easy for adult learners. The SilverCoders programme for trainers.

This eCourse collects the materials developed for trainers to implement the SilverCoders Programme for adult trainers.



Formazione per i formatori

Programmazione di base per gli over 55. Il metodo SilverCoders per i formatori



Formação de Formadores

Literacia digital e programação básica para maiores de 55. O método SilverCoders para formadores.



Formación para formadores

Programación básica para mayores de 55. El método SilverCoders para formadores



To access the ecourse you need to create your own account. To proceed, click on **create a new account and fill-out the required fields**.

Pay attention and read carefully the instructions when creating the password: the password must have at least 8 characters, at least 1 digit(s), at least 1 lower case letter(s), at least 1 upper case letter(s), at least 1 special character(s) such as as *, -, or #

Log in to Silver Coders

Username

Password

Log in

[Lost password?](#)

Is this your first time here?

For full access to this site, you first need to create an account.

Create new account

New account

Username

The password must have at least 8 characters, at least 1 digit(s), at least 1 lower case letter(s), at least 1 upper case letter(s), at least 1 special character(s) such as as *, -, or #

Password

Email address

Upon completion of the registration procedure, you will receive a confirmation email containing a link. This step is required to finalise the creation of the account and allow you access the chosen ecourse.

If you do not receive the confirmation email, please check the junk folder in your email box.

NOW, YOU ARE READY TO MOVE AND NAVIGATE OUR ECOURSE!



[Home](#)

type your user name and password and click on login

Log in to Silver Coders

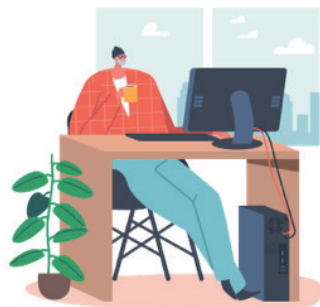
Username

Password

Log in

[Lost password?](#)

If you cannot remember your password, use the “lost your password” feature!



Welcome to the train for trainers ecourse providing SILVERCODERS adults' training programme materials.

The following modules are developed in the form of "half baked" scenarios addressing real-world needs; Through our methodology, Learners will be challenged to complete the given solutions by programming small snippets of code. This is a "low floor" approach to learning, namely the initial knowledge required by learners for starting their engagement is low thus encouraging all to participate.

SilverCoders modules are developed in the form of “half baked” scenarios addressing real-world needs.

Our ecourse is available in English, Greek, Portuguese, Swedish, Italian, Spanish and Romanian. It hosts 32 downloadable challenges covering the following topics:

Basic digital literacy

No-code application creation

Digital content creation

Problem based learning

Basic Programming

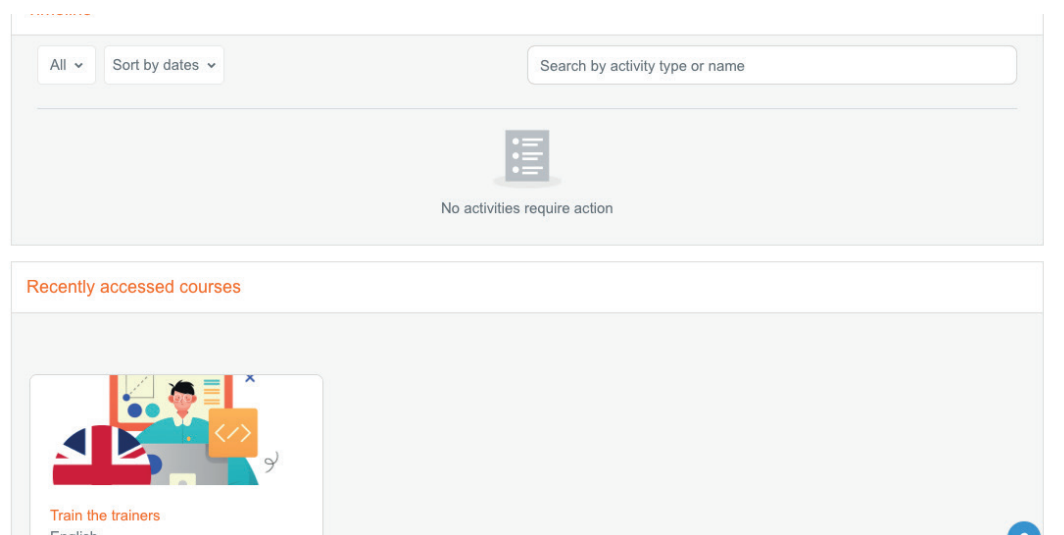
Advanced Programming

Additional educational resources (video lessons and Learning sheets)

YOUR DASHBOARD

Once you sign in to your Moodle site, then it will take you to your dashboard page. Then notice the following on your dashboard—courses, skills, badges, calendar, and the others related to your learning.

Have a glance across the dashboard so that it becomes easy to find out which thing is where.



YOUR PROFILE

You can access your profile from the user menu top right. It's where you see your name and an arrow. Click there to open up the menu. Clicking the Profile link will then display other options, such as a list of your courses, any forum and blog entries and a link to edit your profile.

As a student you can check your profile, update it with information or with a picture. Take note of things under your profile.

Find your profile in the top right corner of your screen (when you use a desktop). And select your profile picture (which gives you a dropdown) to go to your profile page.



YOUR COURSES

When you are logged in, the platform displays only the courses you are enrolled in (to avoid clutter and confusion).

SEE YOUR MOODLE COURSES AT A GLANCE


You'll find it on your main dashboard as 'Course overview.' Take a glance at them from your dashboard. Like the name of a course and its progress. If you've enrolled in many courses, then you'll find the info related to all of them here.


Or see your enrolled courses from your profile page itself. You will find your courses at the bottom of that page.

VIEW A COURSE

Login and access any of your Moodle courses from different locations. Be it from 'My courses', 'Courses overview.' Or be it from your profile page.

Glance through the chapters, topics and whatnots of your course. And have a look at your grades, competencies, and badges associated with a course.

 **Basic digital literacy**

 FILE
Challenge 1 | Understanding Internet 317.3 KB PDF document

Mark as done

This lesson will focuses the Internet and how to use it properly. Though this challenge, learners will first learn about the Internet and will then discover the different web browsers available and what their differences are. They will discover how to use their browsers to do a simple search and understand the difference between a browser and a search engine. The trainees will then practice several more elaborate ways to type web searches and will compare their results. They will also be made aware of the degree of relevance and trustworthiness of the different results they have found.

Click on the title of the lesson to access the chapter to access the pdf document. You can read it or download and print. Each unit represents a challenge, a possible scenario that can be used as a base documentation to develop a specific topic.

Use our methodology for your online and in-presence classes.

IT TAKES APPROXIMATELY 20 NON-STOP HOURS TO FULLY COMPLETE ALL MODULES.

Successful completion will lead to a Certificate.

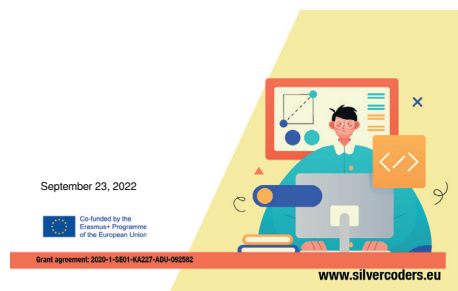
CERTIFICATE OF COMPLETION



Silver Coders

Has successfully completed the course:

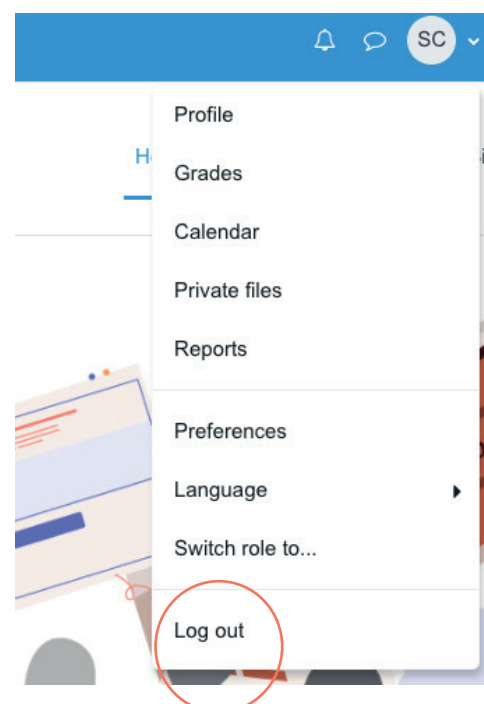
Train the trainers



SIGN OFF FROM YOUR MOODLE

Finally, sign off from your Moodle LMS. To do so, select the 'Log out' option from the dropdown menu from your profile picture.

That way you can securely log out from your Moodle LMS as a student.



This guide was developed to be a useful supporting resource within the framework of the SILVERCODERS (Digital Literacy Improvement Through Effective Learning experiences for Adults) project aimed at reinforcing the coding abilities of 55+ adults.

TO LEARN MORE, FOLLOW THE
LINK OR SCAN THE QR CODE!

WWW.SILVERCODERS.EU

